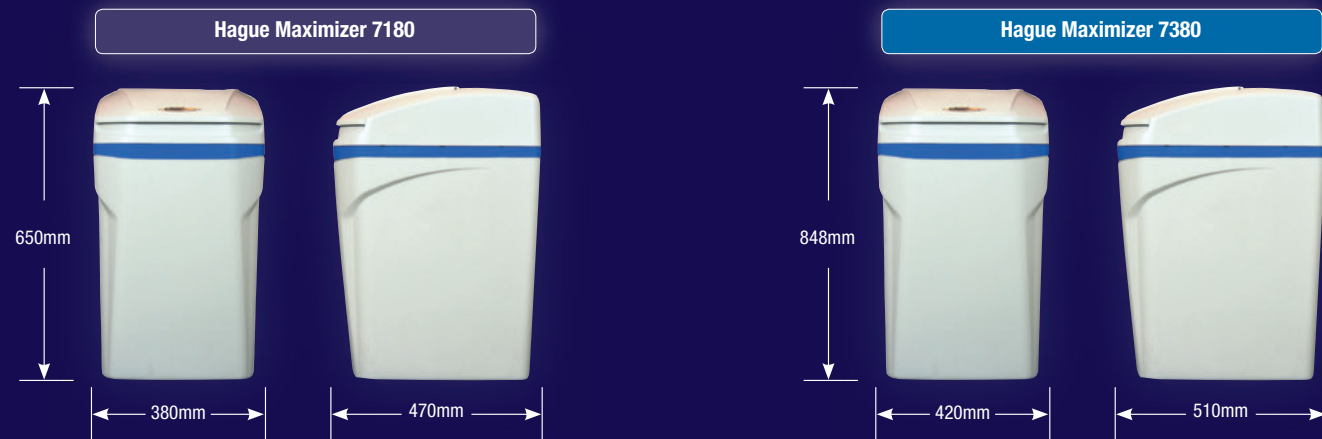


# HAGUE MAXIMIZER® 7180 & 7380

## Dimensions



## Specifications

	Hague Maximizer 7180		Hague Maximizer 7380	
	7180 - 5B	7180 - ST	7380 - 5B	7380 - ST
Model	7180 - 5B	7180 - ST	7380 - 5B	7380 - ST
Control system	5 button Proportional salting controller	Touch screen controller	5 button Proportional salting controller	Touch screen controller
Salt monitor system	N/A	Included	N/A	Included
Max hardness removed	1471 g		2245 g	
Media	20.3L + 1kg ultrafil		35L + 1 kg ultrafil	
Salt used per regeneration	variable 0.5kg- 5.4kg max		variable 0.6 - 4.5kg	
Regeneration time	variable 18 min - 41 min max		variable 30 min - 52 min	
Plumbing connections	1" BSP Male		1.25" BSP Male	
Salt storage	40kg		78kg	
Electrical requirements	220 VAC, 50Hz to 12V transformer		220 VAC, 50Hz to 12V transformer	
Max water temperature	49 degrees C		49 degrees C	
Pressure range (min, max)	1.4 - 8.3 bar		1.4 - 8.3 bar	
Footprint	380mm x 470mm		420mm x 510mm	
Height	648m		848mm	
Clearance required above for salt filling	270mm		270mm	
Shipping weight	39kg		61kg	

# HAGUE MAXIMIZER®

*Water softeners for larger homes*



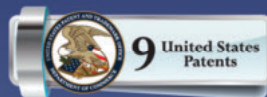
Contact your local dealer:



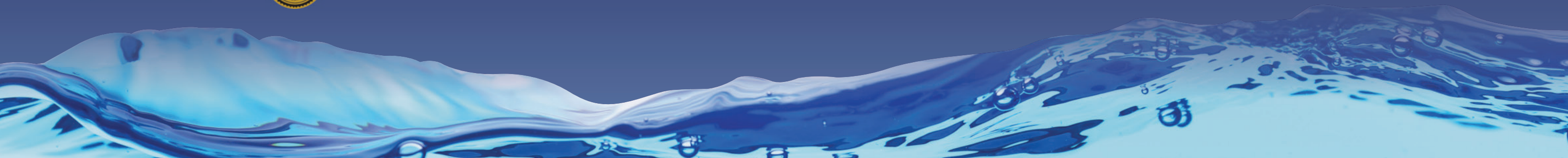
[www.haguewatersofteners.co.uk](http://www.haguewatersofteners.co.uk)



Comprehensive Limited Warranty:  
10 years on tank and cabinet. All mechanical parts including electronic controls are covered for 3 full years



*The right solution...  
for your water*





Established in 1960, Hague Quality Water is one of the oldest major water treatment manufacturers in the world.

Bill Hague began his entrepreneurial journey in 1960 with just a blank piece of paper and a vision. Fifty eight years later, his vision has been realized and the blank paper replaced by countless accolades touting his company's contributions to the water treatment industry, numerous awards, and recognition for multiple cutting edge technological patents and product designs.

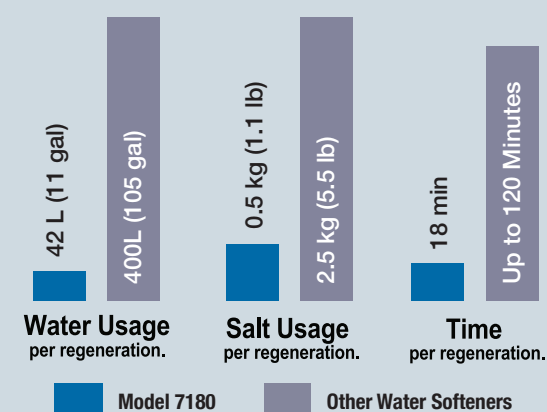
### Full Size Performance In Compact Design

From our computerized solid-state control lens to our exclusive directional flow screens, only the most advanced manufacturing processes and materials have been used to build the Hague Maximizer 7180 and 7380 models.

- Built-in, Salt and Water Saving Technology
- Convenient Easy-Fill Salt Cabinet
- Quality Materials and Components
- Standard "Multi-Function Controller"- Operates By Demand Mode or Time Forced Regeneration
- Optional ST model provides touch screen control and low salt monitoring systems
- Patented Capacity Guard - Never Run Out of Treated Water
- Low Maintenance - Just Fill With Salt As Necessary
- Our Patented Packed Bed Mineral Tank Eliminates The Need For A Second Tank

#### Compare the Savings with **HAGUE MAXIMIZER 7180**

Our patented **High Efficiency** Design means you use less water, salt, and time compared to other conventional softeners.



### THE COMPACT WHOLE HOUSE WATER TREATMENT SYSTEM

- 1 BLENDING BYPASS VALVE**  
Our full 1 inch valve features 1 inch porting throughout to maximize the water flow.
- 2 STANDARD SYSTEM CONTROLLER**  
Operates in three languages and retains cycle settings indefinitely, even through power failures. The time of day setting remains in memory for up to seven days without power.
- 3 WHOLE HOUSE, BUILT-IN, SELF CLEANING FILTER**  
Filters dirt and sediment down to 20 microns - smaller than the human eye can see. Plus, there's never any cartridges to change and no maintenance is required.
- 4 SAFETY SHUT-OFF SYSTEM**  
To help prevent the possibility of any overflows, features a safety shutoff - just the kind of detail you would expect from.
- 5 FINE MESH RESIN**  
Our patented mineral tank with its screened distributor system allows us to pack more resin in the tank and backwash our unit with clean soft water, therefore eliminating the need for a second mineral tank.
- 6 PATENTED DIRECTIONAL FLOW SCREEN**
- 7 OPTIONAL TOUCH SCREEN CONTROLLER AND SALT MONITOR**

